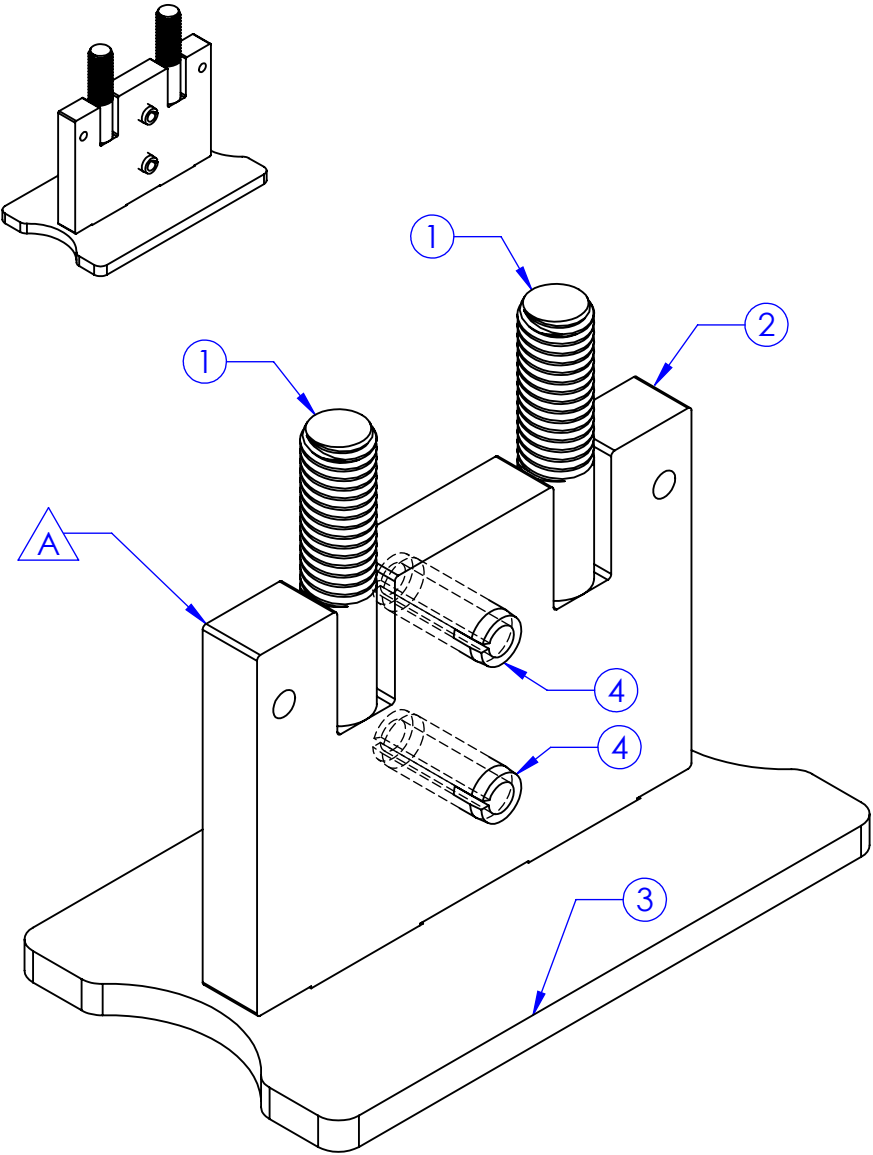
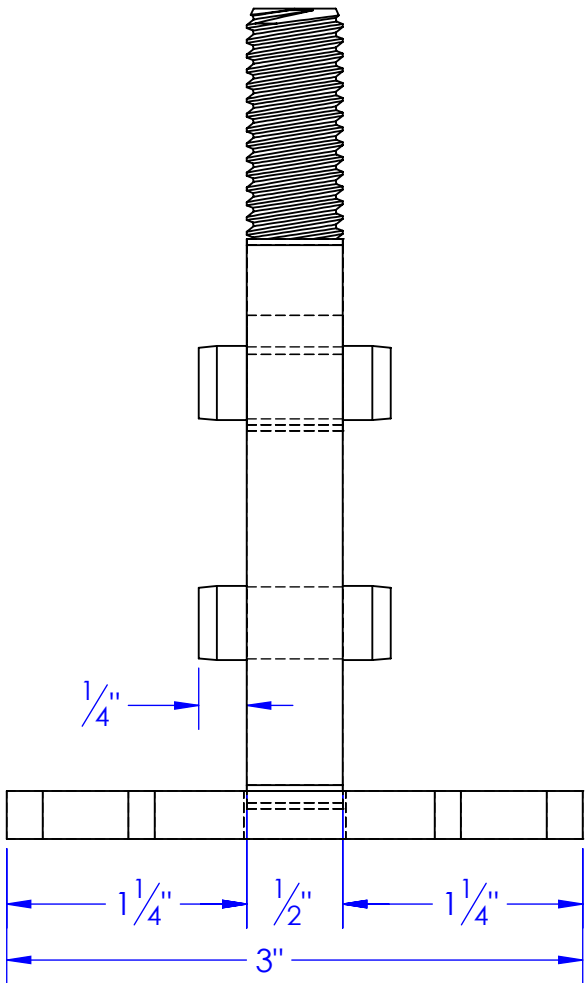
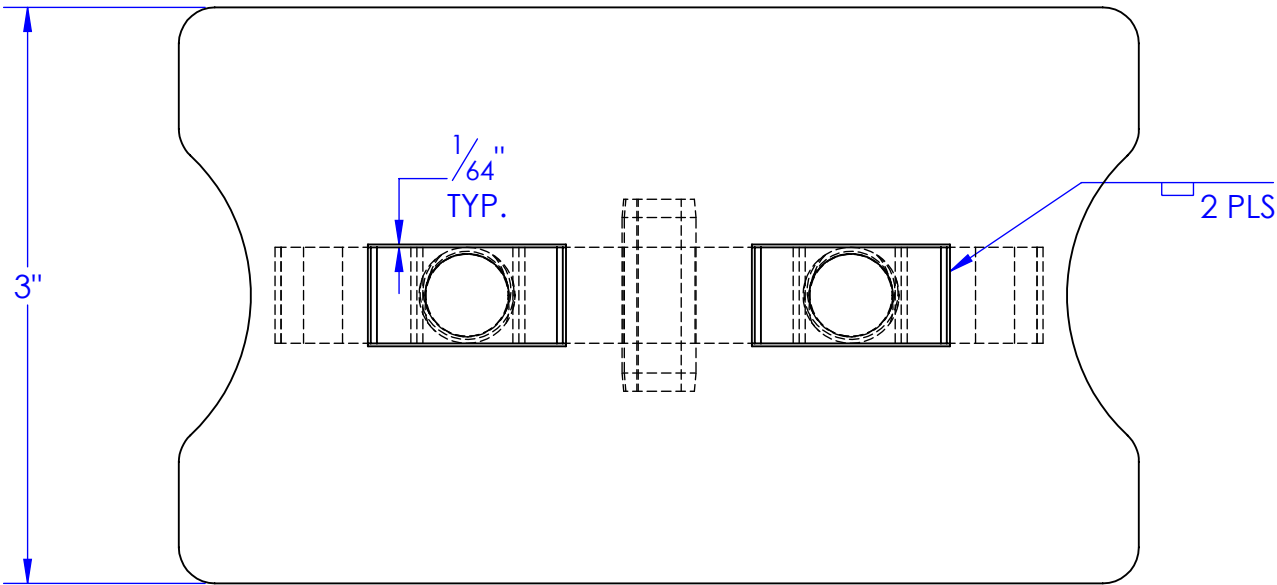
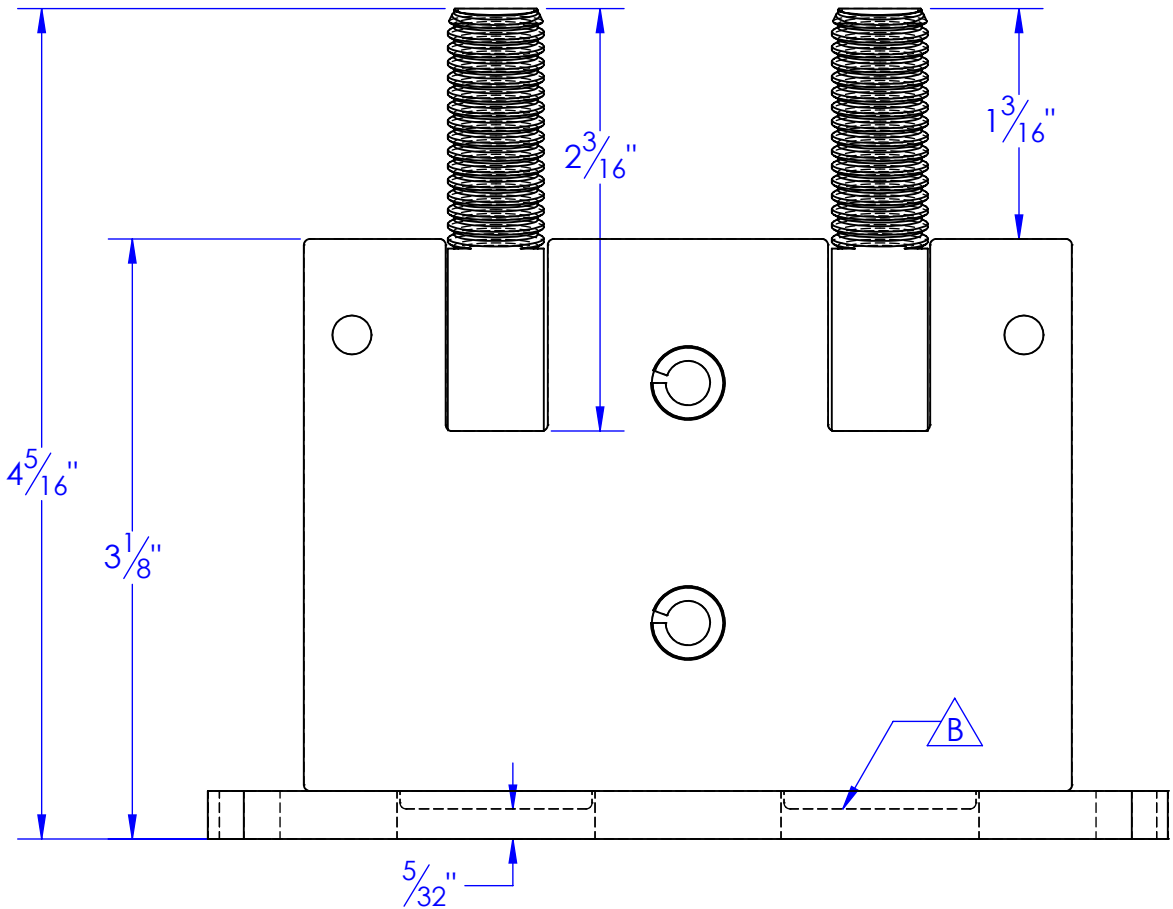


ITEM NO.	PART NUMBER	DESCRIPTION	MATERIAL	DRAWING #	QTY.
1	BO-.5 x 2.25 PIECE	BOLT WITH HEAD CUT OFF	BOLT 1/2-13 x 2-1/4"	40-1603	2
2	FP-HFL-521	SLIDE CENTER, HFL SLIDE	1/2" HRS.	40-2606	1
3	FP-HFL-522	SLIDE BOTTOM, HFL FLIPPER COMP.	1/4" HRS.	40-2607	1
4	HD-PE .375x1	EXPANSION PIN 3/8 x 1		STOCK	2

REVISIONS			
REV.	DESCRIPTION	DATE	APPROVED
A	REV. TO NEW STANDARD PRINT FROM # HFL-520	2/21/2012	
B	SHOWN TONGUE AND GROOVE IN PIECES FOR WELDING	4/16/2013	



REPLACEMENT PART # RE-HFL-520
WHICH ALSO INCLUDES UH-HFL-545 UHMW

PROPRIETARY AND CONFIDENTIAL
THE INFORMATION CONTAINED IN THIS
DRAWING IS THE SOLE PROPERTY OF
<INSERT COMPANY NAME HERE>. ANY
REPRODUCTION IN PART OR AS A WHOLE
WITHOUT THE WRITTEN PERMISSION OF
<INSERT COMPANY NAME HERE> IS
PROHIBITED.

UNLESS OTHERWISE SPECIFIED:

DIMENSIONS ARE IN INCHES
TOLERANCES:
FRACTIONAL ±1/16
ANGULAR: MACH ± 1 BEND ±
TWO PLACE DECIMAL ±010
THREE PLACE DECIMAL ±005

MATERIAL

DO NOT SCALE DRAWING

	NAME	DATE	P.O. BOX 248, SABETHA KS. 66534 (785) 284-3674 FAX (785) 284-3931		
DRAWN	HEATH	4/16/2013	<div>TRIPLE C</div> <div>INC.</div>		
PART #					
ASM #	FP-HFL-520				
COMMENTS:			SIZE DWG. NO. REV		
FLIPPER / SLIDE COMPONENTS			B 40-1603 B B		
			SCALE: 1:1		WEIGHT: 2.43
			SHEET 1 OF 1		